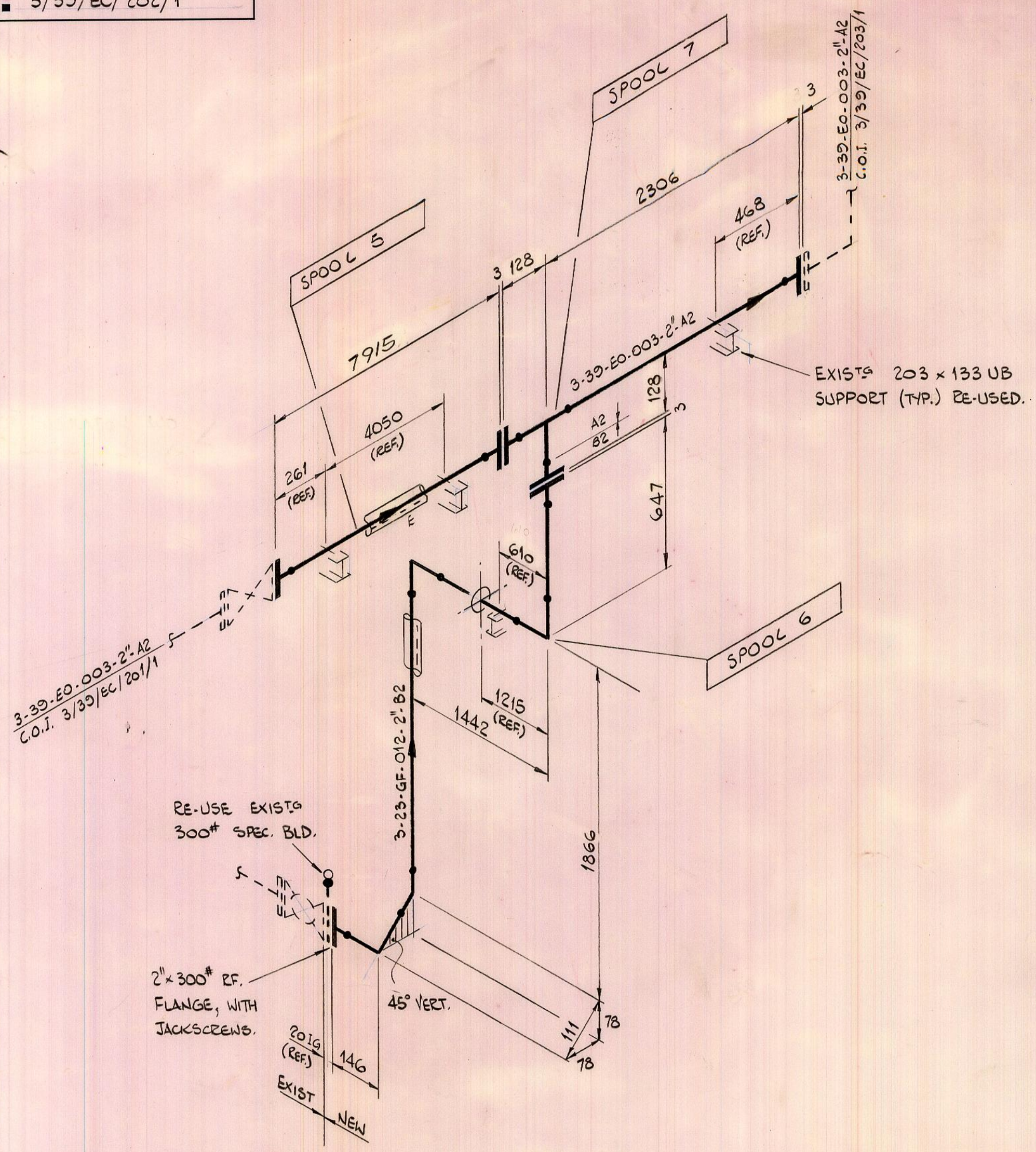


DRG. No. 3/39/EC/202/1



LIST OF MATERIAL FOR FABRICATION.

| ITEM | QTY. | SIZE | DESCRIPTION | WT(Kg) |
|------|------|------|-----------------------------------|--------|
| 9M | 1 | 2"NB | PIPE-SMLS. SCH.160 A106 GR B | 100 |
| 3 | 1 | 2"NB | ELBOW-90° LR. BW SCH.160 A234 WPB | 5 |
| 1 | 1 | 2"NB | ELBOW-45° BW SCH.160 A234 WPB | 1 |
| 1 | 1 | 2"NB | TEE-EQUAL BW SCH.160 A234 WPB | 3 |
| 1 | 1 | 2"NB | FLANGE-300" RF WN SCH.160 A105 | 4 |
| 6 | 1 | 2"NB | FLANGE-150" RF WN SCH.160 A105 | 16 |

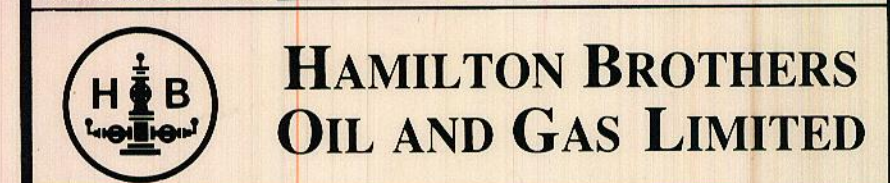
LIST OF MATERIAL FOR CONSTRUCTION

| | | | |
|----|------|--|-----|
| 2 | 2"NB | GASKET-300" SP.WD. 304 SS. C.A.F. FILLED | - |
| 3 | 2"NB | GASKET-150" SP.WD. 304 SS. C.A.F. FILLED | - |
| 12 | 5/8" | STUDBOLTS 3/4 NUTS } ASTM A193-B7 | 3 |
| 8 | 5/8" | STUDBOLTS 3/4 NUTS } ASTM A194-2H CAD. PLTD. | 2 |
| 2 | 5/8" | MACHINE BOLT ASTM A193-B7 | 0.5 |

NOTES :-
FOR GENERAL NOTES
SEE DRAWING
No. 3/39/EC/201/1

| | | | | |
|---|-------------------------|-----|----|---------|
| C | AS-BUILT | HCP | DW | 5/4/88 |
| B | ISSUED FOR CONSTRUCTION | DC | GE | 3/88 |
| A | DIMENSION ALTERED | GE | DC | MAR. 88 |
| A | ISSUED FOR COMMENT | SJF | GE | MAR. 88 |

ORIGINAL PROJECT No. EEHB 2902
PROJECT TITLE



LOCATION: DEEP SEA PIONEER
TITLE: REPLACEMENT PIPEWORK FOR CLOSED DRAIN SYSTEM.

DRG. No. 3/39/EC/202/1
REV. C

| | | | | | |
|--------------|-----------------------|---------------------|---------------|--------------------------|--------------|
| SHEET 1 OF 1 | ENGINEER H.B.O.G.LTD. | DRAWN BY SJFLINDALL | CHECKED BY GE | APPROVED H.B.O.G.LTD. DW | DATE 11-3-88 |
|--------------|-----------------------|---------------------|---------------|--------------------------|--------------|

THIS DRAWING CONTAINS PROPRIETARY INFORMATION BELONGING TO HAMILTON BROTHERS AND MAY NOT BE WHOLLY OR PARTIALLY REPRODUCED NOR DISCLOSED WITHOUT PRIOR WRITTEN PERMISSION OF HAMILTON BROTHERS OIL AND GAS LTD.